



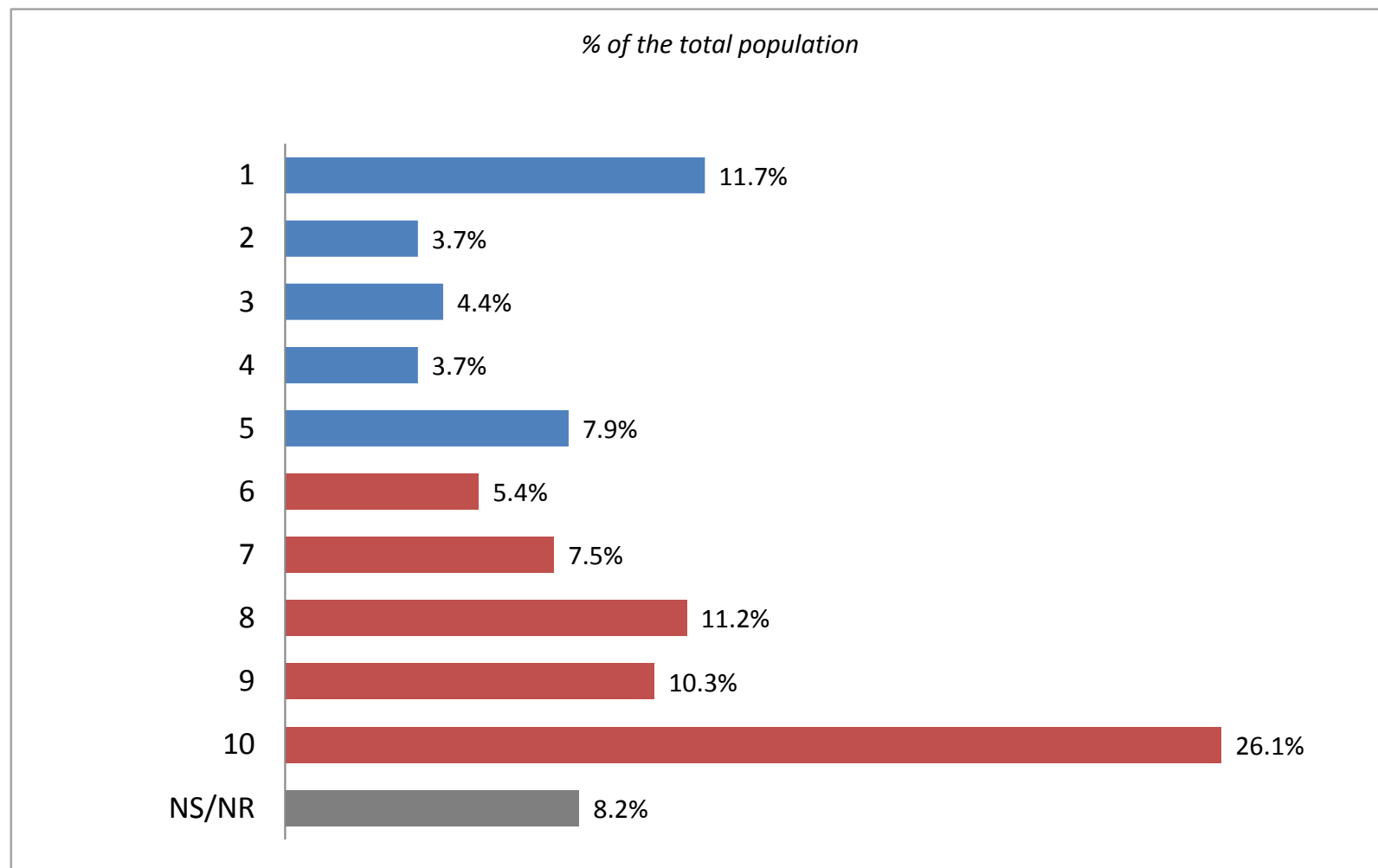
National Survey

Ianuarie-februarie 2019

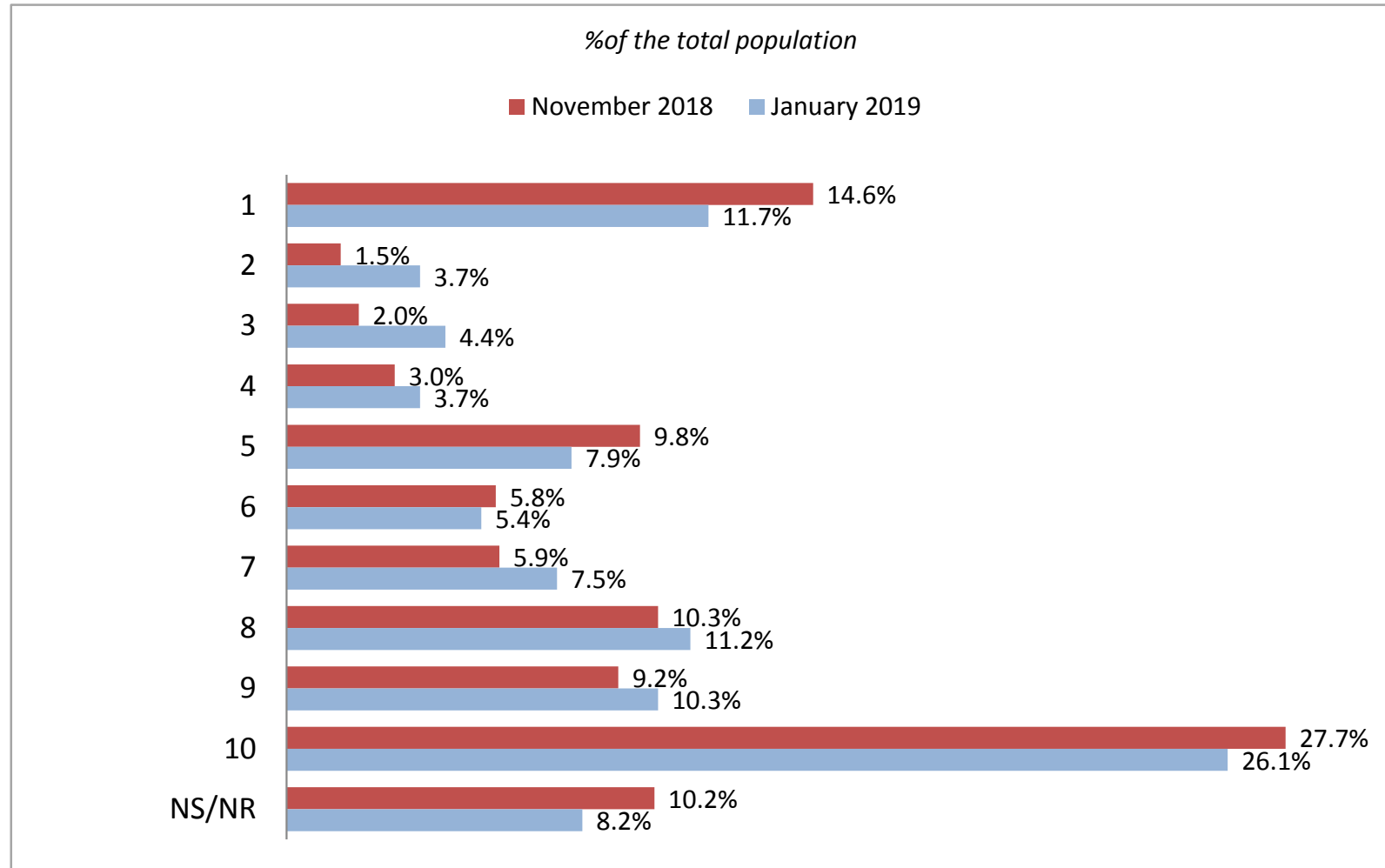
Methodology

- ✓ The national survey was conducted by INSCOP Research and commissioned by Konrad Adenauer Foundation
- ✓ The data was collected between January 21 and February 5, 2019
- ✓ The volume of the sample was of 1080 persons and it is representative for the non-institutionalized population of Romania, aged 18 and over.
- ✓ The maximum permissible error of the data is 3%, at a confidence level of 95%.
- ✓ The type of the sample: multi-layered, probabilistic
- ✓ The method used was of a survey based on a questionnaire applied by the interviewers at the respondents' home
- ✓ The questionnaire was applied in all the counties of Romania and districts of Bucharest
- ✓ The sample was validated based on the official data from The National Statistical Institute
- ✓ Data analysis can be found on www.inscop.ro, in the "Research" section.

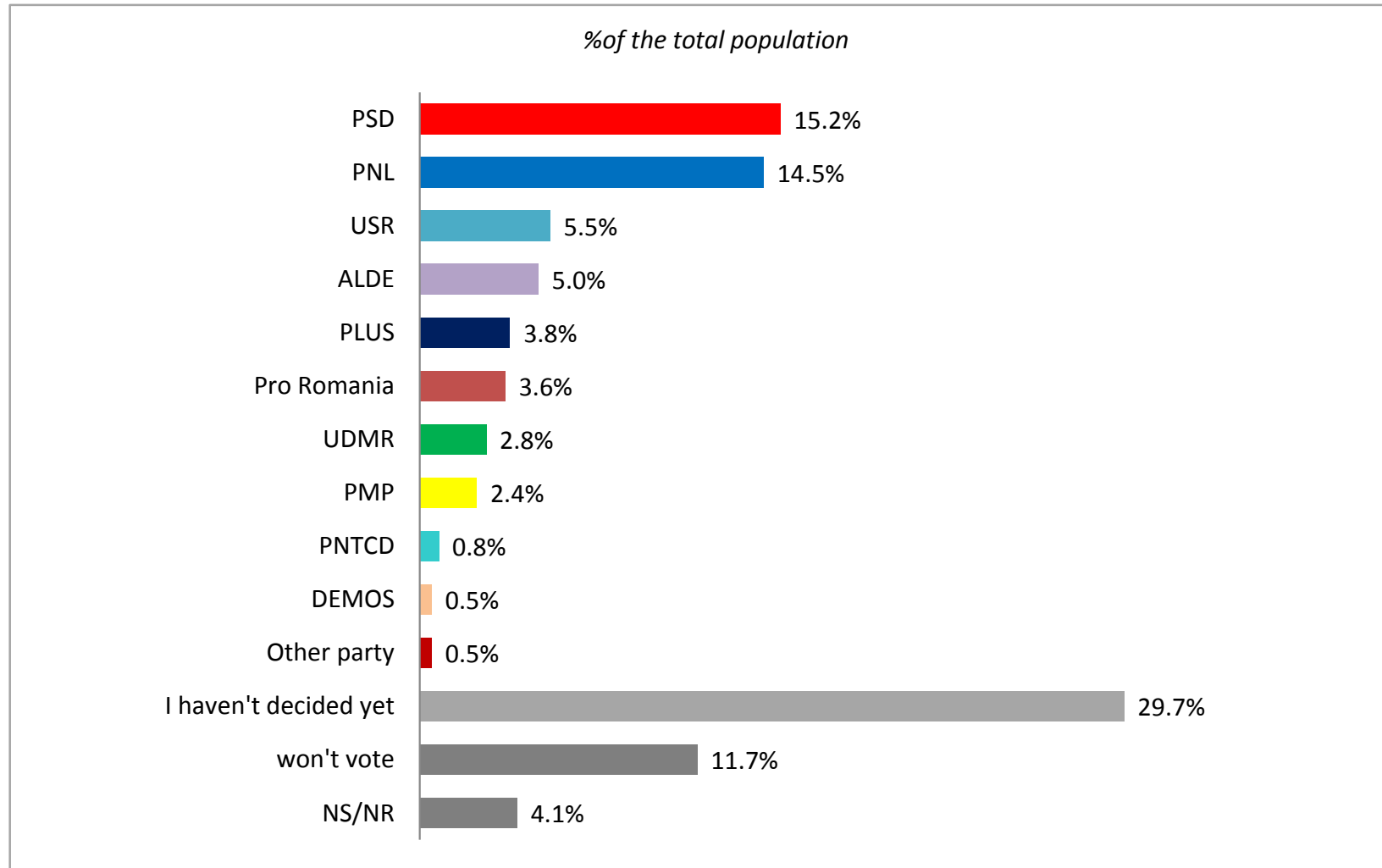
On a scale of 1 to 10, where note 1 means "I will certainly not vote" and note 10 means "I will certainly vote", which one describes best the likelihood of you voting in the European Parliament elections , held in may 2019?



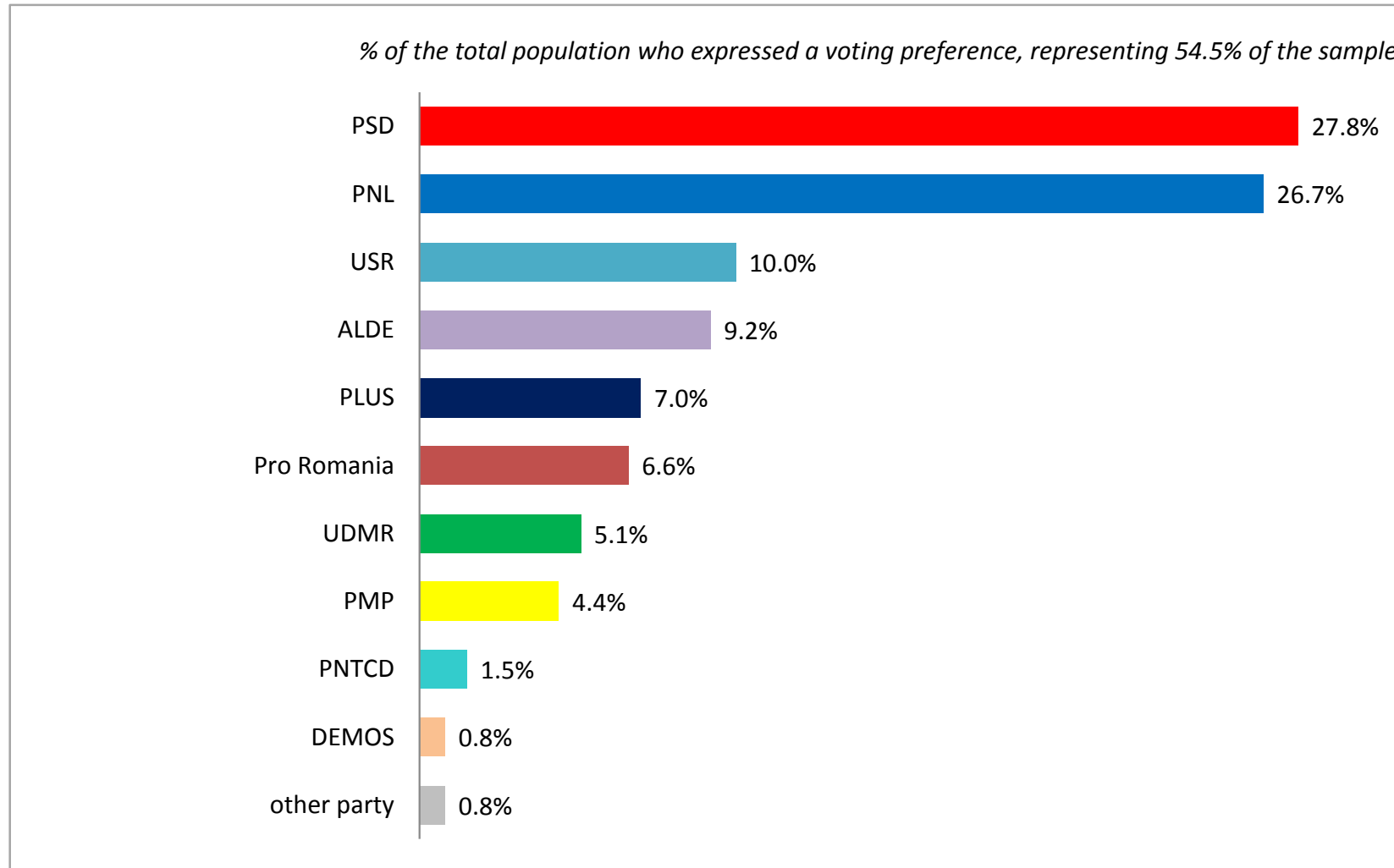
On a scale of 1 to 10, where note 1 means "I will certainly not vote" and note 10 means "I will certainly vote", which one describes best the likelihood of you voting in the European Parliament elections , held in may 2019?



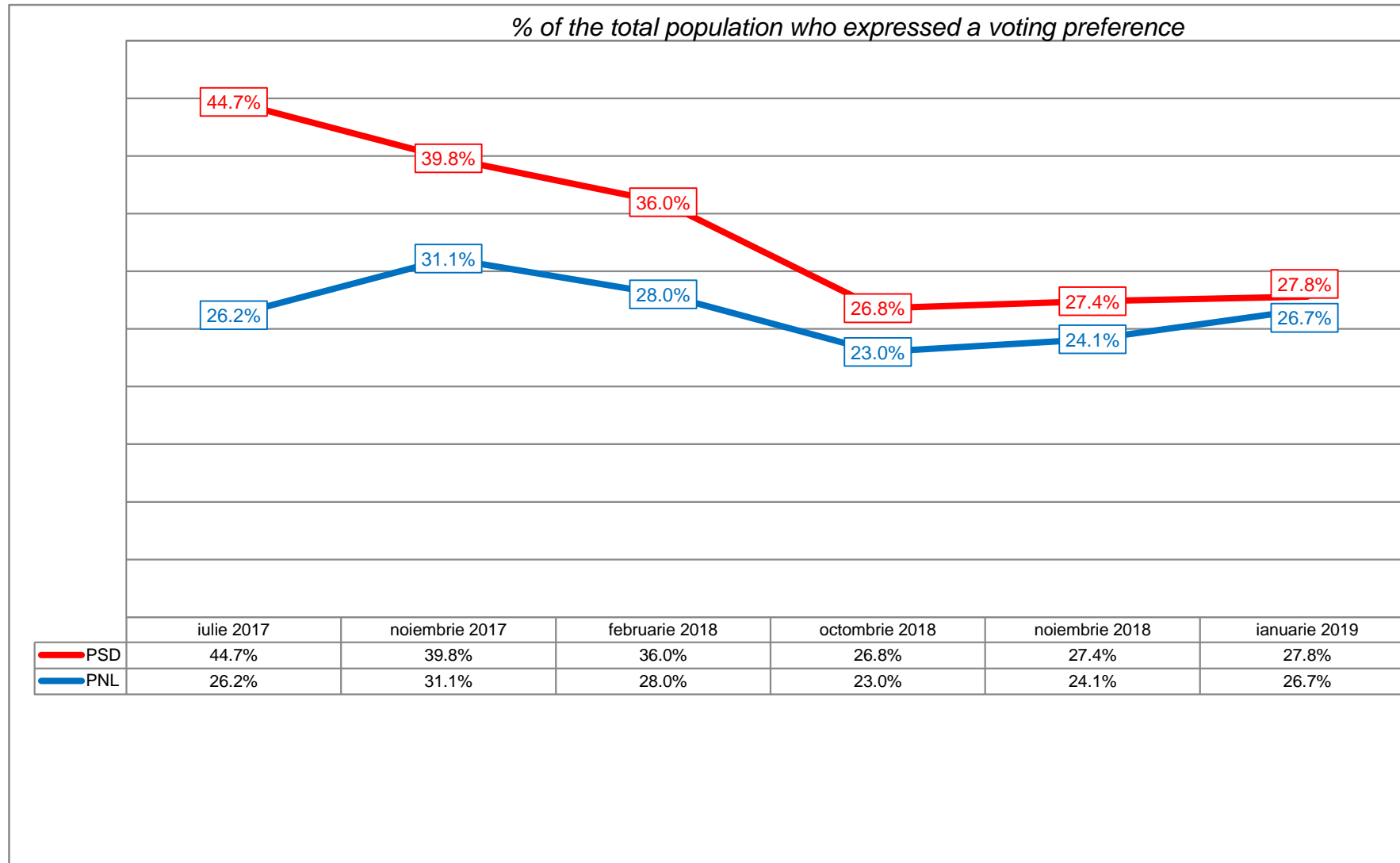
Which party or alliance would you vote for if the European Parliament elections were to be held next Sunday?



Which party or alliance would you vote for if the European Parliament elections were to be held next Sunday?



The evolution of voting options for political parties - 1



The evolution of voting options for political parties - 2

